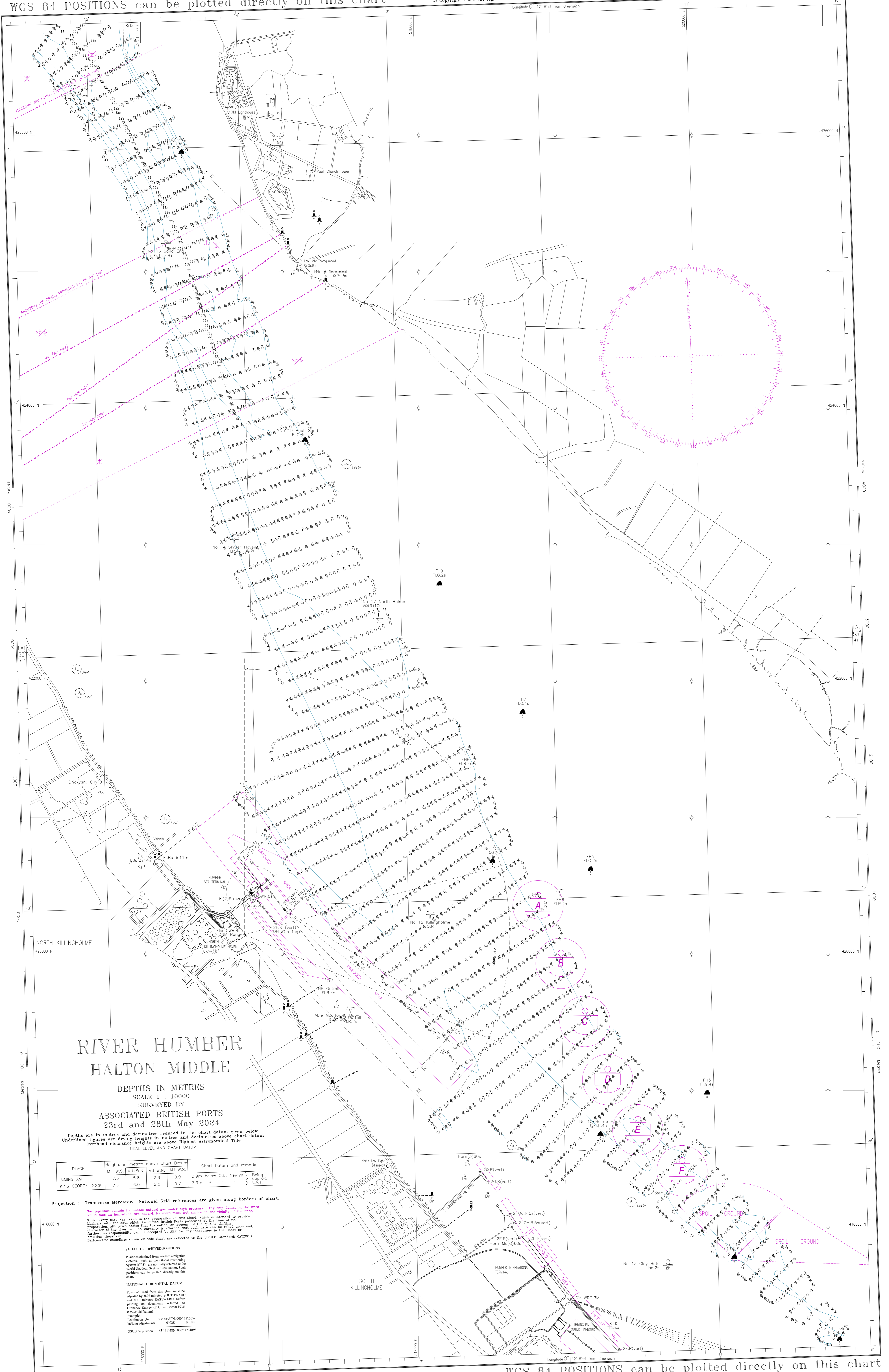


WGS 84 POSITIONS can be plotted directly on this chart

© Copyright 2024. All rights reserved. No part of this product may be reproduced in any form (including photocopying or by electronic means) without prior permission.



RIVER HUMBER HALTON MIDDLE

DEPTHS IN METRES
SCALE 1 : 10000

SURVEYED BY
ASSOCIATED BRITISH PORTS
23rd and 28th May 2024

Depths are in metres and decimetres reduced to the chart datum given below
Underlined figures are drying heights in metres and decimetres above chart datum
Overhead clearance heights are above Highest Astronomical Tide
TIDAL LEVEL AND CHART DATUM

PLACE	Heights in metres above Chart Datum				Chart Datum and remarks
	M.H.W.S.	M.H.W.N.	M.L.W.N.	M.L.W.S.	
IMMINGHAM	7.3	5.8	2.6	0.9	3.9m below O.D. Newlyn } Being approx. L.A.T.
KING GEORGE DOCK	7.6	6.0	2.5	0.7	3.9m

Projection :- Transverse Mercator. National Grid references are given along borders of chart.

Gas pipelines contain flammable natural gas under high pressure. Any ship damaging the lines would face an immediate fire hazard. Mariners must not anchor in the vicinity of the lines. Whilst every care was taken in the preparation of this Chart, which is intended to provide Mariners with the data which Associated British Ports possessed at the time of its preparation, ABP does not accept any responsibility for any error or omission, or for any damage or loss, or for any delay, or for any consequences arising from the use of this Chart, or for any inaccuracies in the Chart or omission therefrom. Bathymetric soundings shown on this chart are collected to the U.K.H.O. standard: CAYZOC C

SATELLITE-DERIVED POSITIONS

Positions obtained from satellite navigation systems, such as the Global Positioning System (GPS), are normally referred to the World Geodetic System 1984 Datum. Such positions can be plotted directly on this chart.

NATIONAL HORIZONTAL DATUM

Positions read from this chart must be adjusted by 102 metres SOUTHWARD and 410 metres EASTWARD before plotting on documents referred to the Ordnance Survey of Great Britain 1936 (OSGB 36 Datum).

Position on chart
bearing adjustment 53° 41' 30N, 000° 12' 50W
0° 02S 0° 10E
OSGB 36 position 53° 41' 48N, 000° 12' 40W

WGS 84 POSITIONS can be plotted directly on this chart